

XTOOL | F1

Fastest Portable Laser Engraver with IR + Diode Laser

XTOOL



Software



User Manual



extremely-high
engraving speed



Powerful
Cutting Capability



Ultra-fine
Precision



Super Easy to Use



Hight Security



Low Cost

What's xTool F1

xTool F1 is the world's first laser engraver integrating a 2W 1064nm infrared laser with a 10W 455nm diode laser. It can engrave at a maximum speed of 4000mm/s, allowing you to finish a project in the blink of an eye.



From Fun to Success



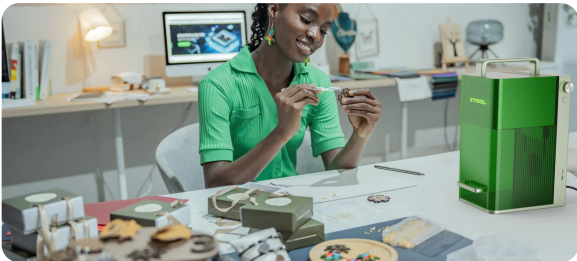
For Engraving Right on the Spot

With a small laser engraver as portable as xTool F1, you can bring it to the fair, party or anywhere you want to go. Safe and speedy, xTool F1 can perform engraving right in front of everyone, and generate no smoke or cause laser light harm. It will totally surprise people with its fast and precise engraving.



For Craft Fair/Flea Market Customization

Use xTool F1 to engrave unique signs for your customers, adding special memory to the merchandise. Customers can choose what they want to engrave on your device and it can finish the engraving in seconds.



For DIY hobbyists

Bring your crafting ideas into life in a blink of an eye. That's what you can do with xTool F1. With its abilities to engrave photos and designs on paper cards or metal jewelry, xTool F1 is perfect for laser starters who love to create. The machine is preassembled, and smart to use. Easy to operate but powerful in functionalities.



Enclosed Design, Extra Safety

Protect your eyes and hands



Two Powerful Lasers in One Machine

Work on regular materials and most metal



Two-Step Focus

Live Engraving Preview

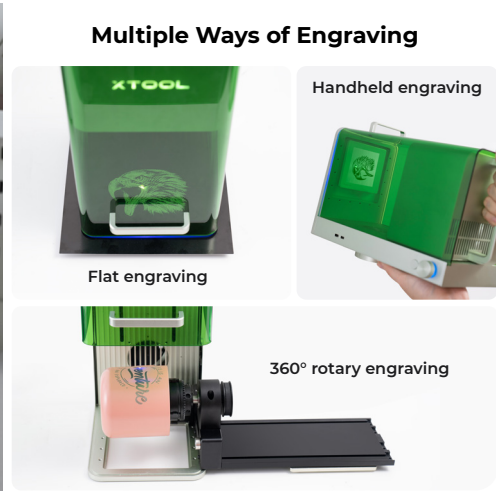


Desktop Smoke Purifier for Indoor Engraving



Multiple Devices Adapted

Windows / macOS / iPadOS / iOS / Android
Enabling you to prepare your engraving projects anytime, anywhere.



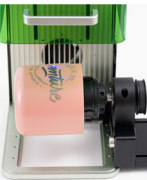
Multiple Ways of Engraving



Flat engraving



Handheld engraving



360° rotary engraving

Specification

Type	Details	
Laser type	10W diode laser	2W 1064nm infrared laser
Product size	179mm*235mm*334mm	
Product weight	4.6kg	
Accuracy	Movement accuracy: 0.00199mm/Repeat positioning accuracy: 0.000248mm	
Working area	115*115mm rounded rectangl/ Expandable to 400*115mm with accessories	
Preview	Rect	Outline
Preview speed	Rect: 12000mm/s	Outline: 8000mm/s
Up to working speed	4000mm/s	
Applications	XCS	Lightburn
Connection	WiFi	USB
Support file	SVG / DXF / JPG / JPEG / PNG / BMP,etc.	
Support systems	Android / iOS / iPad / Windows / macOS	
Input	24V 5A	