



**Flex-Europa M.E.FZC**  
Sharjah Airport Int'l Freezone  
Plot F3-17, P.O.Box 8509  
Sharjah, UAE  
Ph: +971 6 55 78 200  
Dubai Production City  
PBU No. B31, P.O.Box 383816  
Dubai, UAE  
Ph: +971 4241 5414  
00971 6 55 78 300 info@flex-europa.me www.flex-europa.me

# Flatbed Table Laminator

FOR ALL SIZE PRINTS & KINDS OF BOARD



### Benefits

- Extra-large 6000\*2000 flatbed table
- Perfectly flat applicator to any substrate with no bubbles
- Can be run by one operator
- Ergonomic working position
- Free access to roller, media and table top
- Protected activation button
- Backlit cutting table improves accuracy and control
- Can accommodate media up to 100mm thick

Exclusive design of side-pocket holders  
**Invention Patent protection**  
Allowed the roll materials rolling in the side pocket.  
Avoid any damage for the prints.  
The holders could be removed easily if no use.

### Features

- LED table illumination
- Heat assisted roller
- Built in silent Air compressor
- Heavy duty Steel frame
- Tension Media feed shafts
- Side media roll holders

### Option:

- Material holder
- Clear PVC cutting mat for top of table

Model	FY-1325	FY-1530	FY-1737
Max laminating size	1300/2500mm	1500/3000mm	1700/3700mm
Max laminating thickness	100mm	100mm	100mm
Operation type	Manual	Manual	Manual
Max temp	Room~60°C	Room~60°C	Room~60°C
Roller upgrade	Air cylinder	Air cylinder	Air cylinder
Heating	Infrared	Infrared	Infrared
Preheating	10~15min	10~15min	10~15min
Power input	0.8~1.0kw/h	0.8~1.0kw/h	0.8~1.0kw/h
Pressure Range	0-0.8Mpa	0-0.8Mpa	0-0.8Mpa
N.W.	600kgs	800kgs	900kgs

Slim but strong Machine Body  
Pure Steel frame structure  
Laboratory level flat surface  
10mm thickness Tempered Glass  
Anti-scratching and withstand impact  
All corners and edges are rounded

Free Gantry Design  
Ensure there is nothing but the roll on the table, no longer need to pass the materials under the gantry, greatly simplify user operations.

## Many Applications with one Machine

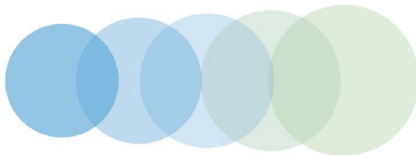
Whether you're pre-masking cut letters, mounting prints onto boards or laminating, the FAYON flatbed applicator will help you do the job without wrinkles or bubbles resulting in a smooth finish everytime. Even over size prints can be finished with ease. What's more, it can be run with one operator making your shop more efficient!

### Let Your Work Table Work for You

Every shop has a work table, why not invest in a flatbed applicator work table that apply mount, laminate, backlight and much more in the same space? When not in use applying, it can also be used as a standard cutting table.

### Note:

Flexible adjusting in table height, convenient for different operators  
Make you could always find a suitable height to deal with different kinds materials and different works.



### One Button Control

The table roll lifting is controlled by electromagnetic valve can stands 200,000 times reciprocation. According to the gripping habits of human palms, it is allowed to operate the Silica roller lifting while moving the gantry.

Exclusive design of mechanical tension device  
We chose the rectangular spring to get the process of increasing friction more smoothly and continuously, result in a better control of materials tension.  
**Invention Patent protection**  
Tight and fix the core by twisting the black ring outer, which can keep the whole locking continuous stable.

